

Weather station

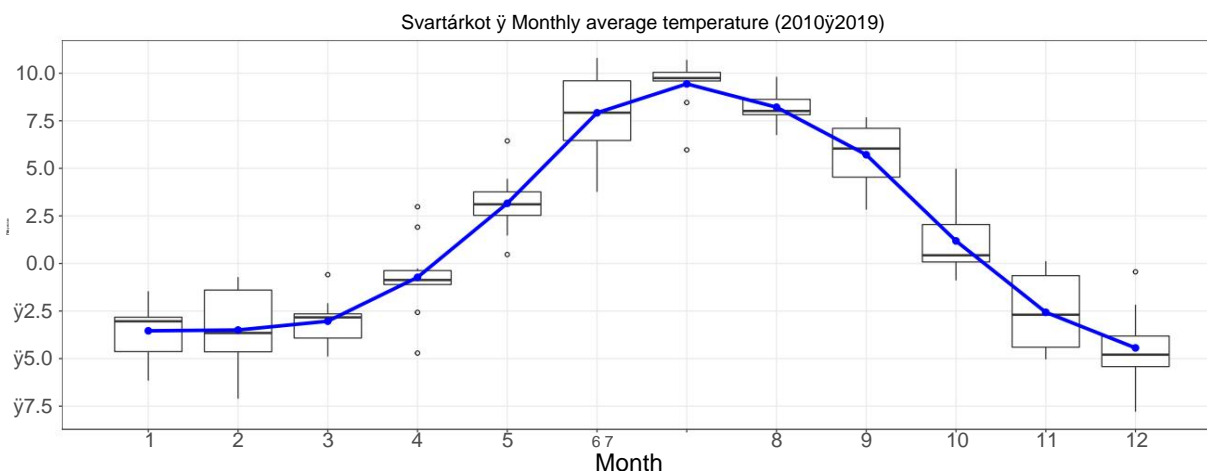
3292 Svartákot

Weather information

Metadata

Station	Name	Beginning	Width	Length	Height (m)	Period
3292	Black River	2003	65,342	17,243	405	2010-2019

Fever



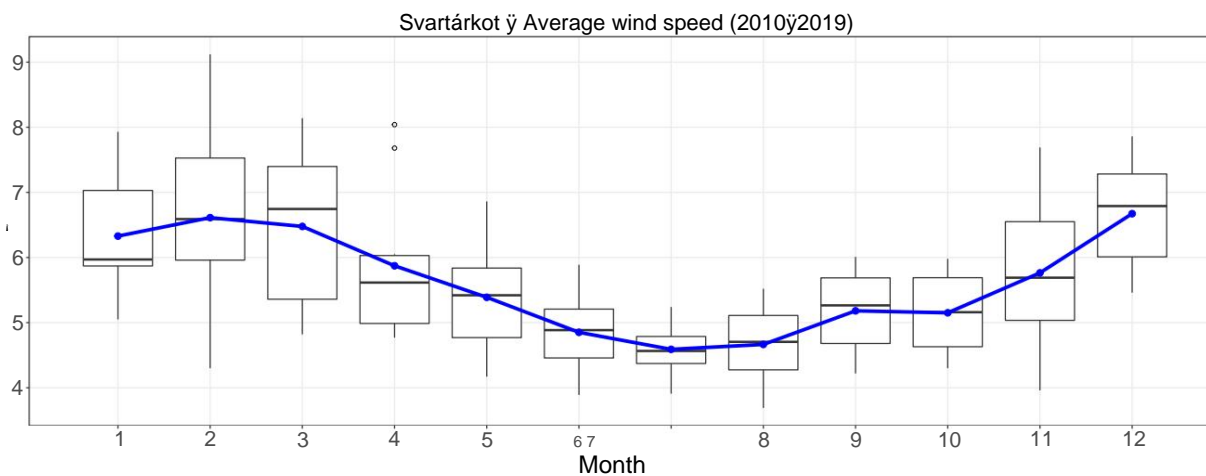
	January	Feb	bruise	April	May	June	July	August	Sep	Oct	Nov	Dec	the year
Average temperature °C	̄3.5	̄3.5	̄3.0	̄0.7	3.2	7.9	9.4	8.2	5.7	1.2	̄2.6	̄4.4	1.5
Highest temperature °C	11.2	8.8	12.0	17.2	18.4	22.1	23.8	26.7	19.5	16.2	13.1	12.1	26.7
Daily highest temperature	3/2019	23/2018 26/2012		30/2019 26/2004		6/2018 25/2017		13/2004	5/2010	10/2010	18/2018 29/2014		13/08/2004
Lowest temperature °C	̄29.8	̄29.3	̄29.8	̄23.0	̄13.6	̄4.1	̄0.6	̄2.5	̄9.2	̄19.3	̄25.2	̄29.0	̄29.8
Daily lowest temperature	16/2007	3/2019	8/2019	12/2013	2/2013	7/2011	10/2011	29/2018	24/2005	30/2014	21/2004 29/2017		8/03/2019

Figure 1: Seasonal temperature variation (°C). The box plots are based on monthly averages from 2010 to 2019. The crossbar of each box shows the median value, with 50% of the values (25%-75%) within the box. The vertical lines show outliers that are no further away from the box than 150% of its size. Outliers that fall outside these limits are shown as a circle. The blue dots and the line between them show the 10-year average for each calendar month, the values can be found in a table. The table also shows the highest and lowest temperatures for each month, along with the date (day/year). The outliers are found for the entire period of measurements at the station. Only the most recent date is given if the outlier occurs more than once.

Precipitation

Precipitation is not measured at the station.

Wind speed



	January	Feb	bruise	April	May	June	July	August	Sep	Oct	Nov	Dec	the year
Average wind speed m/s 6.3		6.6	6.5	5.9	5.4	4.9	4.6	4.7	5.2	5.2	5.8	6.7	5.6
Highest wind m/s 31.2		29.0	30.2	23.5	25.0	23.0	20.1	22.0	28.9	22.4	28.8	34.2	34.2
Day of the highest wind 7/2011		24/2017	14/2011	18/2014	20/2018 8/2015		9/2018	31/2014	10/2012	10/2013	30/2014	11/2019	11/12/2019
Maximum wind speed m/s 48.1		39.0	38.0	31.6	33.6	30.3	28.8	28.3	31.4	32.4	37.8	42.0	48.1
The most turbulent day 7/2011		24/2017	14/2011	20/2009	20/2018	8/2015	9/2018	31/2014	2/2013	4/2015	30/2014	11/2019	7/01/2011

Figure 2: Average wind speed (m/s) for each calendar month. The box plots are based on monthly averages from 2010 to 2019. The crossbar of each box shows the median value, with 50% of the values (25%—75%) within the box. The vertical lines show outliers that are no further from the box than 150% of its size. Outliers that fall outside these limits are shown as a circle. The blue dots and the line between them show the 10-year average for each calendar month, the values can be found in a table. The table also shows the highest wind speed and highest gust for each month, along with the date (day/year). The outliers are found for the entire period of measurements at the station. Only the most recent date is given if the outlier occurs more than once.

Wind roses

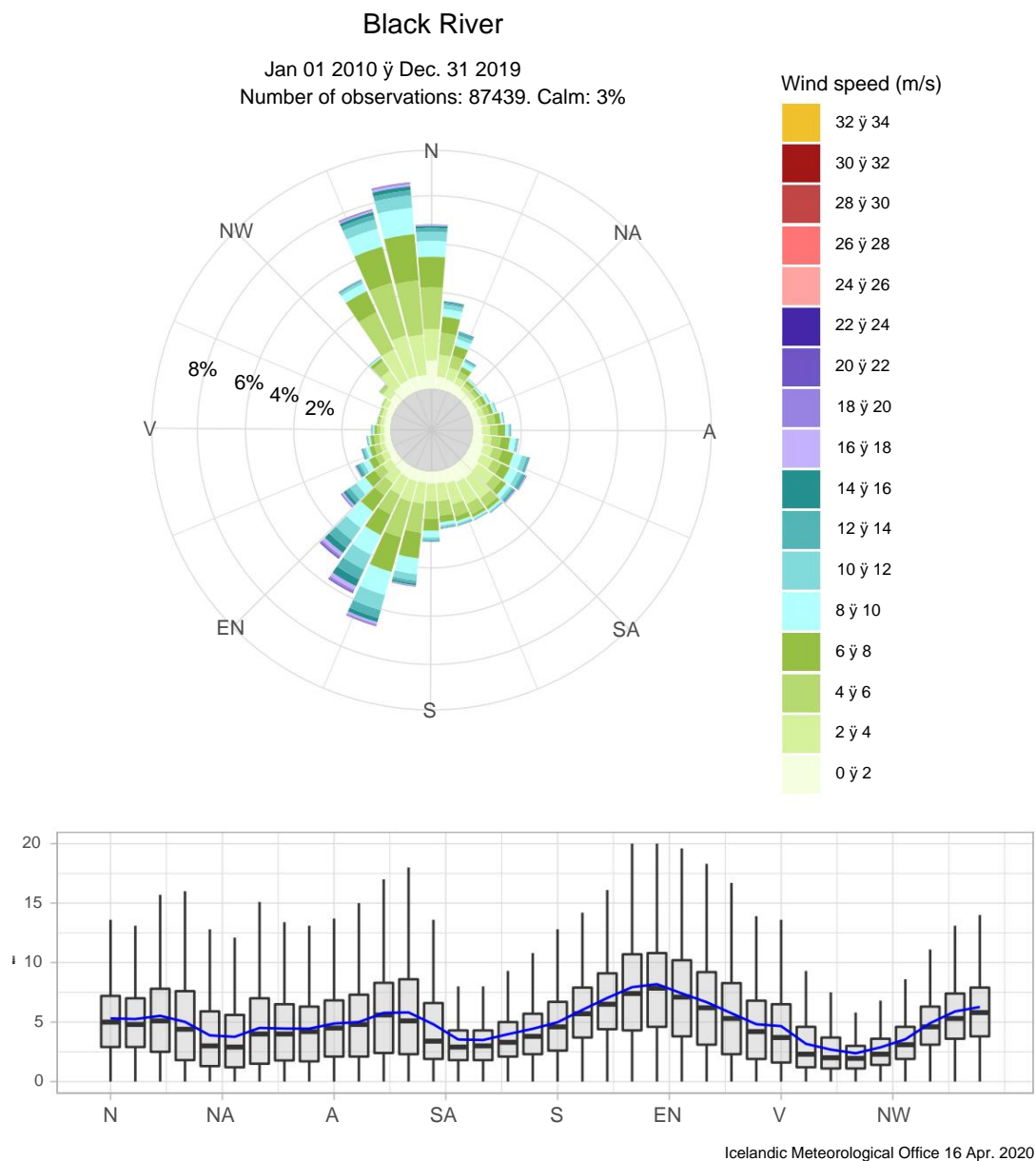


Figure 3: Wind rose (%) for the period 2010 to 2019. Average wind speed and direction are shown in a box plot.

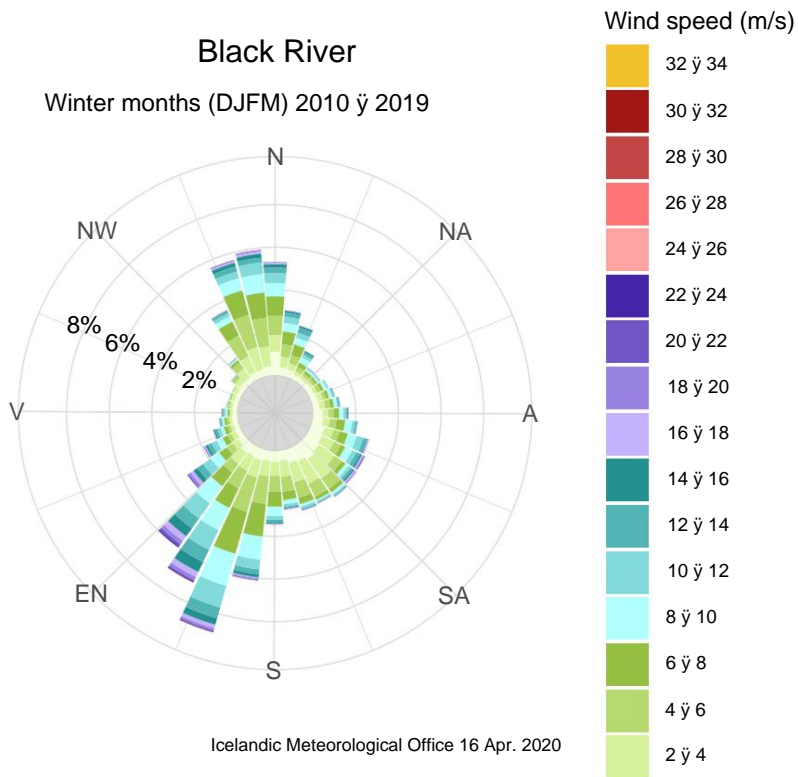


Figure 4: Wind rose (%) for the winter months, December - March, period 2010 to 2019.

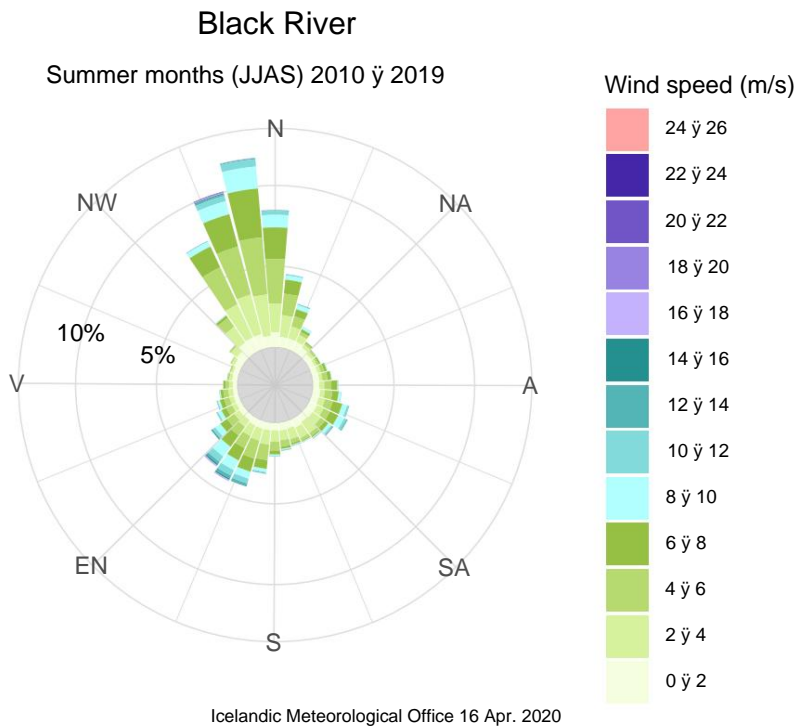


Figure 5: Wind rose (%) for the summer months, June - September, period 2010 to 2019.

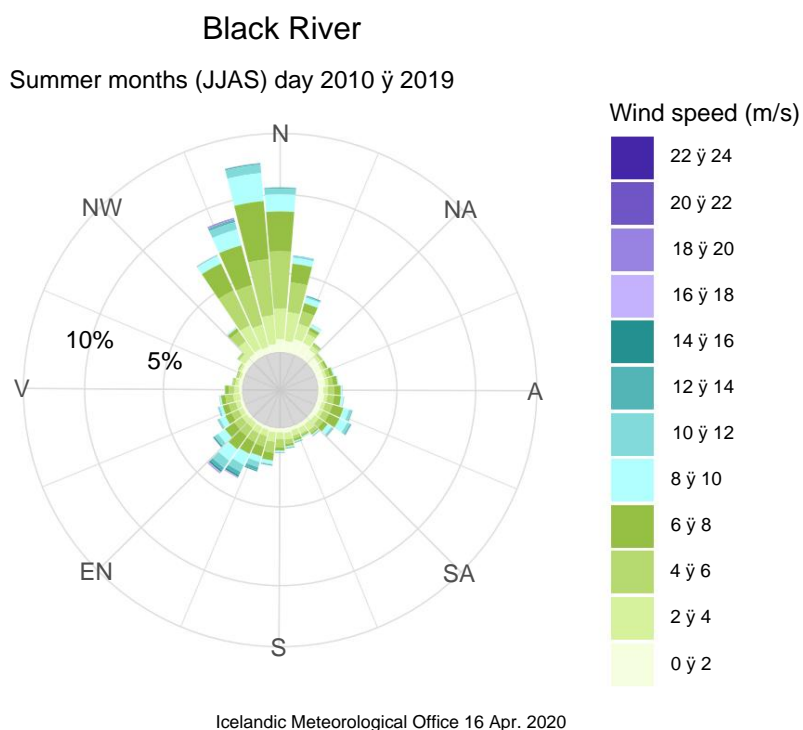


Figure 6: Wind rose (%) for the summer months, June - September during the day (8 am - 8 pm).

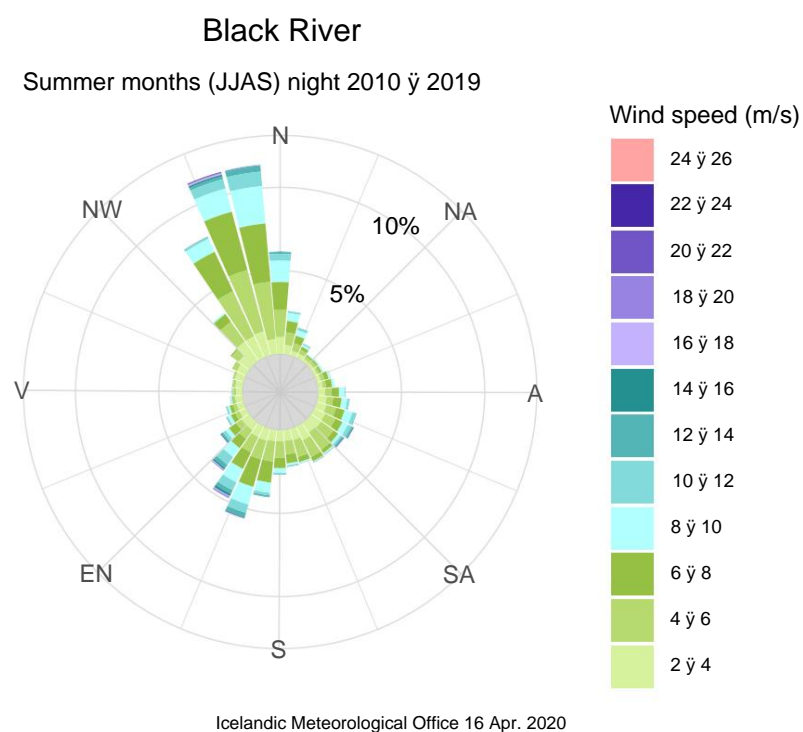


Figure 7: Wind rose (%) for the summer months, June - September overnight (9pm-7am).

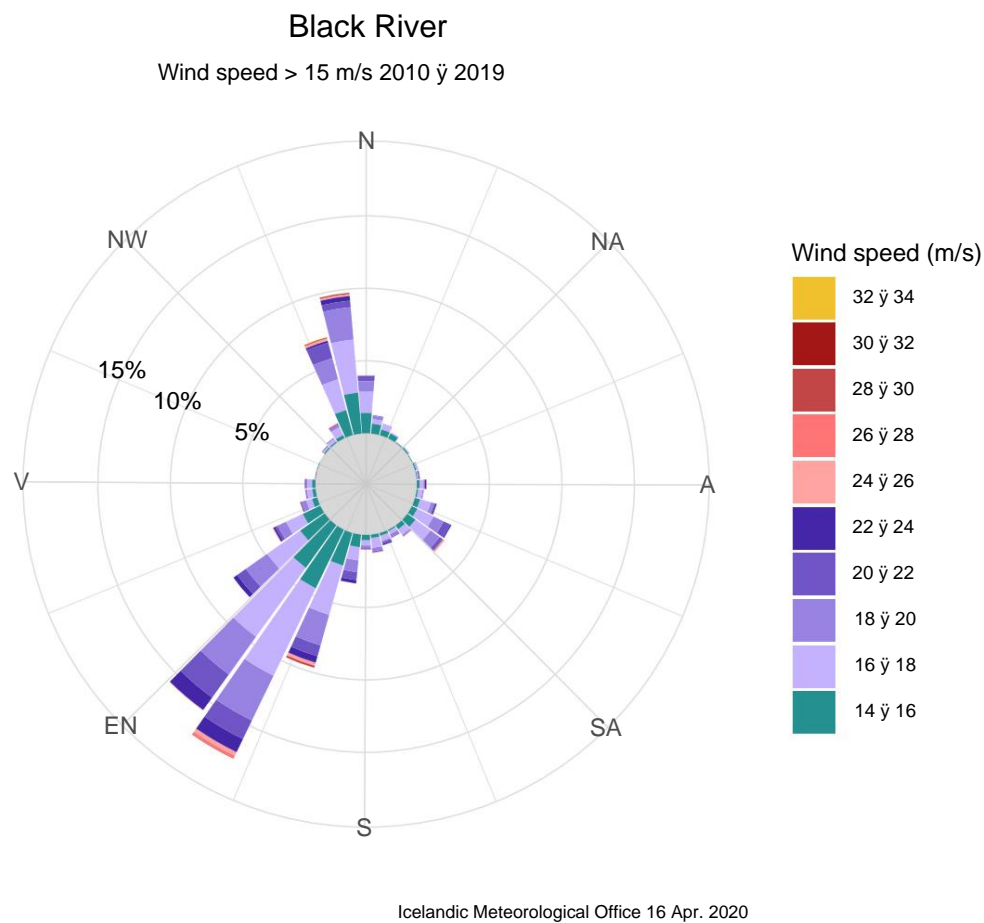


Figure 8: Wind rose (%) when wind speed is greater than 15 m/s, period 2010 to 2019.

Deficiencies - Fever

The monthly average temperature was calculated for the period 2010 to 2019. The average temperature is not calculated for those months where which more than 72 measurements are missing, which is equivalent to 3 days. The table below shows how Multiple years were used to calculate the monthly average temperature for each month. Data is available from 9/2003 to 3/2020.

The extreme values (maximum and minimum temperatures) are found for the entire period.

Number of years in average temperature of each month.

	Jan	Feb	Mar	Apr	May	Jun	Jul	Aug	Sep	Oct	Nov	Dec	
Number of years	10	10		10	10		10	10	10		10	10	10

Deficiencies - Precipitation

Precipitation is not measured at the station.

Missing - Wind

The average wind speed was calculated from monthly values for the period 2010 to 2019. The average wind speed of individual The month is not calculated if more than 72 metric values are missing, which is equivalent to 3 days. In the table here Below you can see how many years were used to calculate the average wind speed for each month. Data is available from 9/2003 to 3/2020. The extreme values (maximum wind speed and maximum gust) are found for the entire period.

Number of years in average wind speed for each month.

	Jan	Feb	Mar	Apr	May	Jun	Jul	Aug	Sep	Oct	Nov	Dec	
Number of years	9	10		10	10		10	10	10		10	10	10

Information about months that are not included in the monthly average. NA means that no value is calculated in this month. month. It is specified how many measurements are missing in the month (measurements are recorded hourly), NA means that all measurements are missing for the month.

Station	Year	Month	Average wind	Number missing
3292	2014	1	NA	103